



SPECIFICATION OF CALI

Principal Particulars

Overall Length	125.9m
Breadth	32m
Depth	12m
Designed Draft	7.86m
Gravity Draft	6~7.5m
Light Draft	4.4m
Accommodation	100 persons
Endurance	30 Days
Certification	ABS
Deck Area	1800m ²
Deck Load Capacity	10t/m ²
Break Water	2.5m

Generator

Total Generator Power	3800kw
Main Generator	
AC 1,600KW X 690V X 50HZ/ 2 sets	
Emergency generator	
AC 600KW X 690V X 50HZ /1 sets	

Machinery of Deck

Working Anchor Winch	500kNX8 Sets
Working Mooring Line	
φ 78 X 1Sets X 3830 MBL X1350m+9t HHP Anchor	
φ 52 X 7Sets X 1700 MBL X1350m+9t HHP Anchor	
Emergency Anchor Winch	350kNX1 Sets
Emergency Mooring Line	
φ 52 X 2Sets X 1700 MBL X500m+7t HHP Ancho	

Crane

Main Hook

Auxiliary hoist

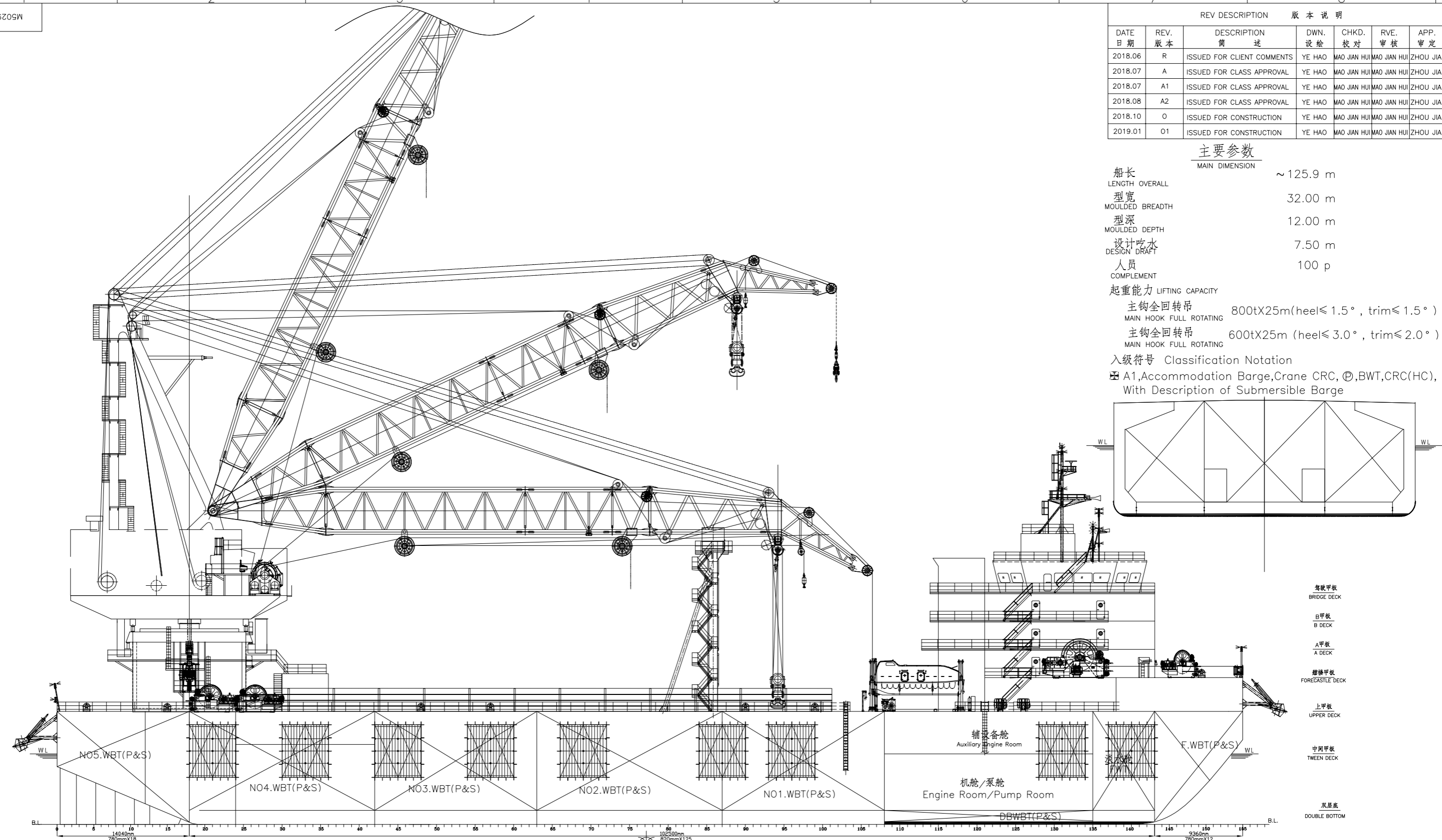
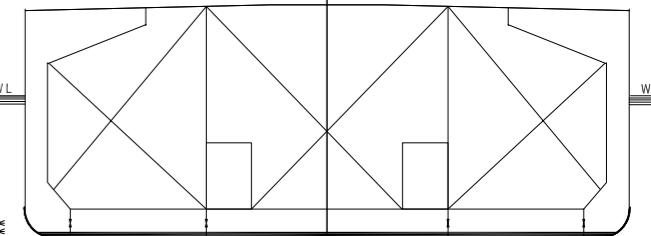
Type	Double hoists	Single hoists
Load (Full Revolving)	800t X 25m (Heel 1.5°, Trim 1.5°)	100t X 70m (Heel 3.0°, Trim 2.0°)
Load (Full Revolving)	400t X 39m (Heel 1.5°, Trim 1.5°)	
Load (Full Revolving)	600t X 25m (Heel 3.0°, Trim 2.0°)	
Minimum Radius	16.3m	21.8m
Velocity (Full Load)	3 m/min	13 m/min
Velocity (Empty Load)	6 m/min	26 m/min
Lifting Height (Above Deck)	71.4m	78.5m

REV DESCRIPTION 版本说明						
DATE 日期	REV. 版本	DESCRIPTION 描述	DWN. 设绘	CHKD. 校对	RVE. 审核	APP. 审定
2018.06	R	ISSUED FOR CLIENT COMMENTS	YE HAO	MAO JIAN HUI	MAO JIAN HUI	ZHOU JIAN
2018.07	A	ISSUED FOR CLASS APPROVAL	YE HAO	MAO JIAN HUI	MAO JIAN HUI	ZHOU JIAN
2018.07	A1	ISSUED FOR CLASS APPROVAL	YE HAO	MAO JIAN HUI	MAO JIAN HUI	ZHOU JIAN
2018.08	A2	ISSUED FOR CLASS APPROVAL	YE HAO	MAO JIAN HUI	MAO JIAN HUI	ZHOU JIAN
2018.10	O	ISSUED FOR CONSTRUCTION	YE HAO	MAO JIAN HUI	MAO JIAN HUI	ZHOU JIAN
2019.01	O1	ISSUED FOR CONSTRUCTION	YE HAO	MAO JIAN HUI	MAO JIAN HUI	ZHOU JIAN

主要参数

MAIN DIMENSION	
船长 LENGTH OVERALL	~ 125.9 m
型宽 MOULDED BREADTH	32.00 m
型深 MOULDED DEPTH	12.00 m
设计吃水 DESIGN DRAFT	7.50 m
人员 COMPLEMENT	100 p
起重能力 LIFTING CAPACITY	
主钩全回转吊 MAIN HOOK FULL ROTATING	800tX25m(heel≤ 1.5°, trim≤ 1.5°)
主钩全回转吊 MAIN HOOK FULL ROTATING	600tX25m(heel≤ 3.0°, trim≤ 2.0°)

入级符号 Classification Notation
 A1,Accommodation Barge,Crane CRC, ⊕,BWT,CRC(HC),
 With Description of Submersible Barge



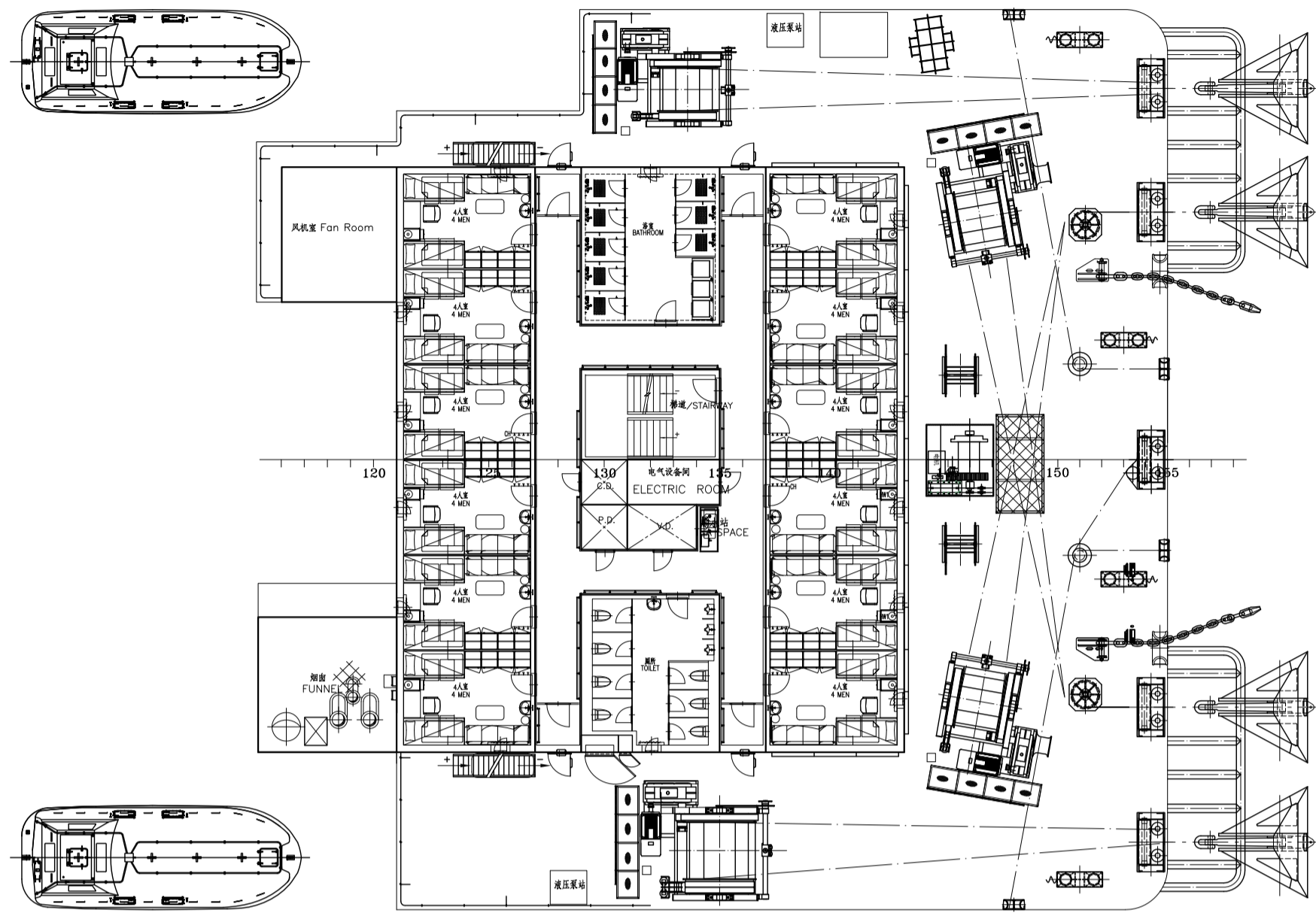
审查同意
 本图纸业经 ABS 船级社
 2018年08月10日第 I1766417 号文
 及 _____ 年 _____ 月 _____ 日
 第 _____ 号文审批同意
 MARIC

OWNER 船东	CDES SHANGHAI SALVAGE MINISTRY OF TRANSPORT 交通运输部上海打捞局
BUILDER 建造单位	COSCO SHIPYARD COSCO(NANTONG) SHIPYARD CO.,LTD 南通中远船务工程有限公司
DESIGNER 设计单位	MARIC MARINE DESIGN & RESEARCH INSTITUTE OF CHINA 中国船舶及海洋工程设计研究院
	SALVAGE CRANE BARGE 打捞起重工程船
	DETAIL DESIGN 详细设计

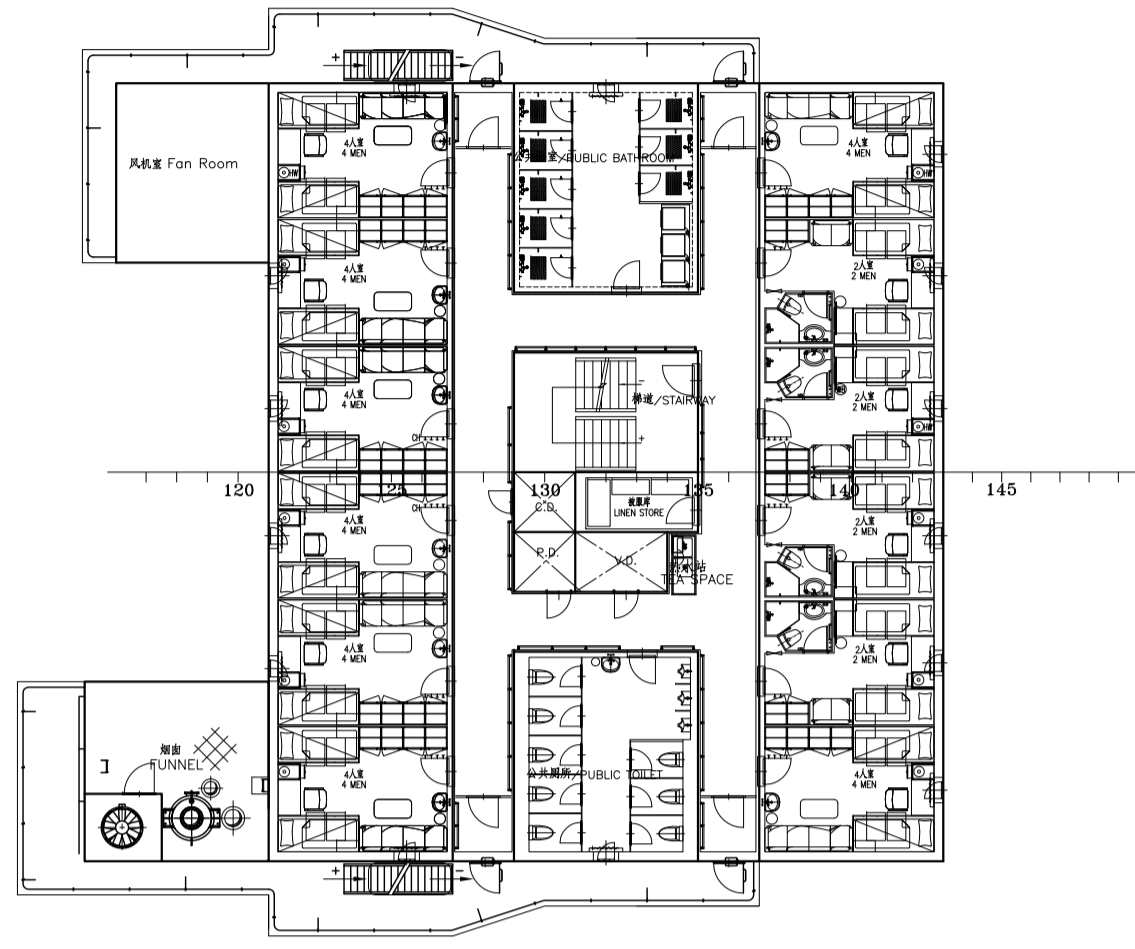
GENERAL ARRANGEMENT 总布置图		M50290-100-002	
REV 版本	WEIGHT(kg) 重量(公斤)	SCALE 比例	
O1		1:200	
AREA 面积	TOTAL 总计	PAGE 页	
1.5 m ²		共 3 页 第 1 页	

A
B
C
D
E

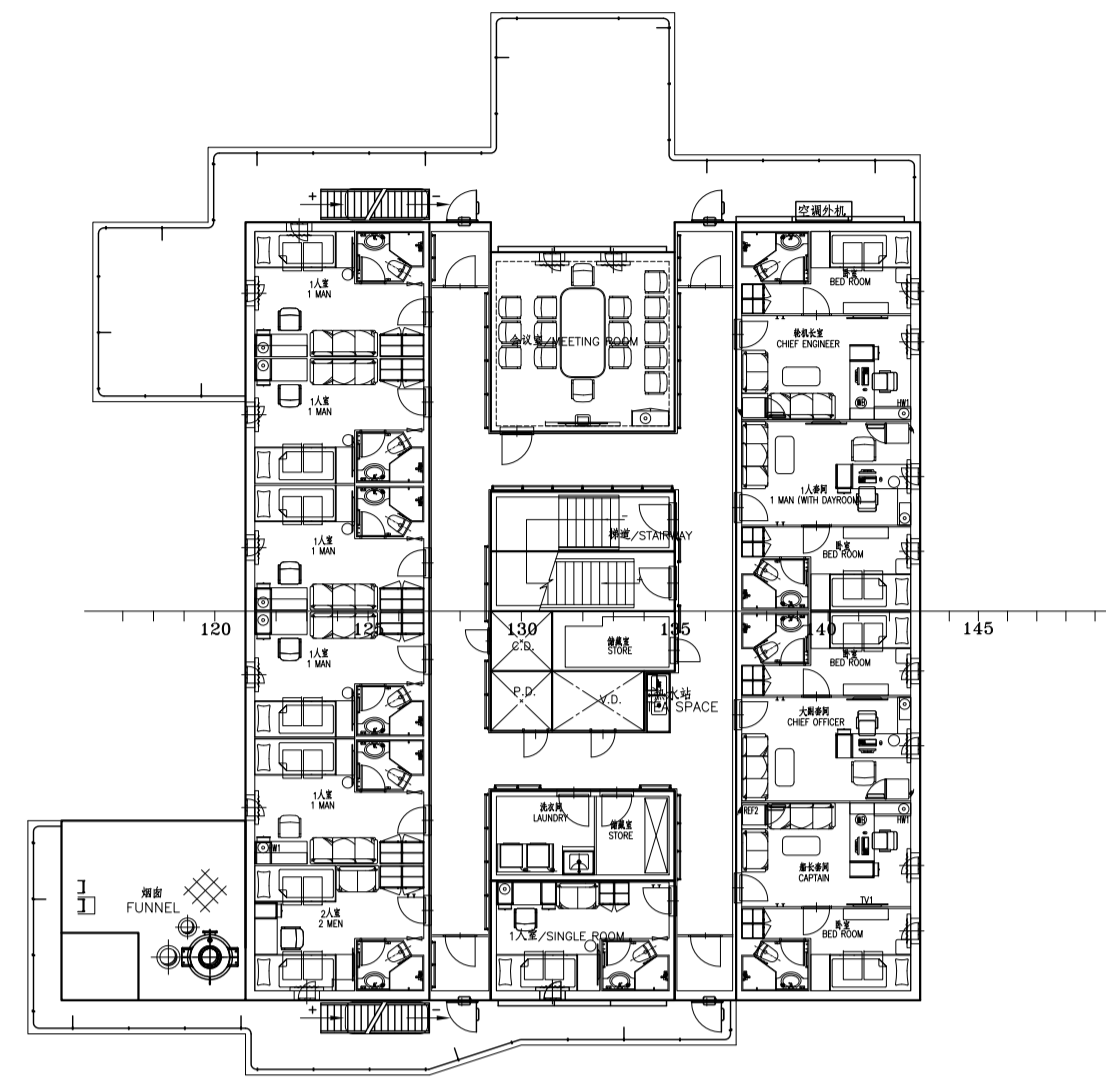
艏楼甲板
FORECASTLE DECK



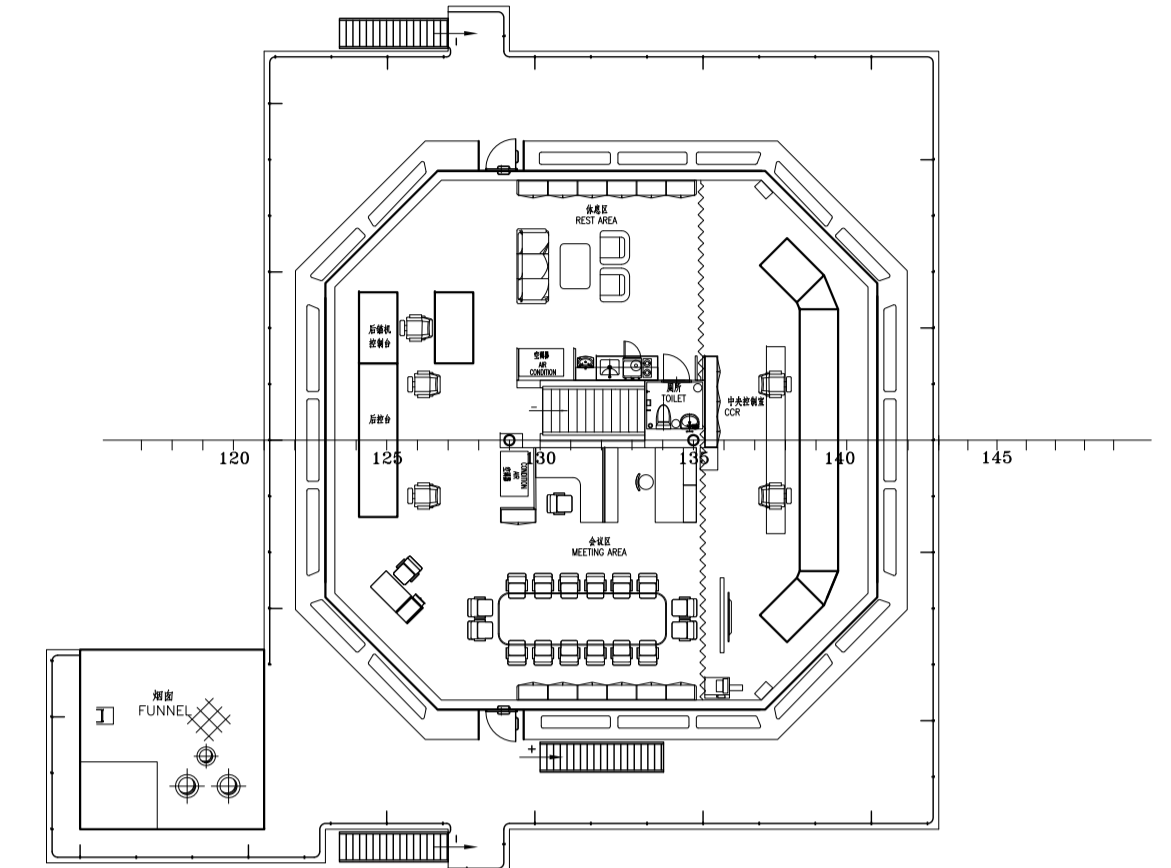
A甲板
A DECK



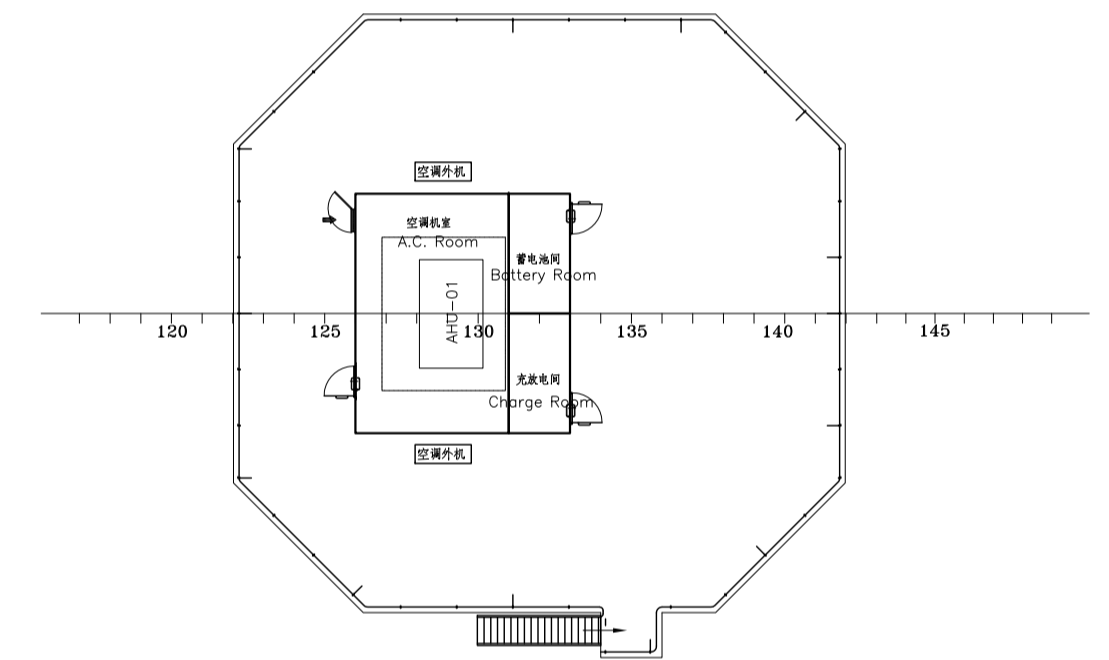
B甲板
B DECK



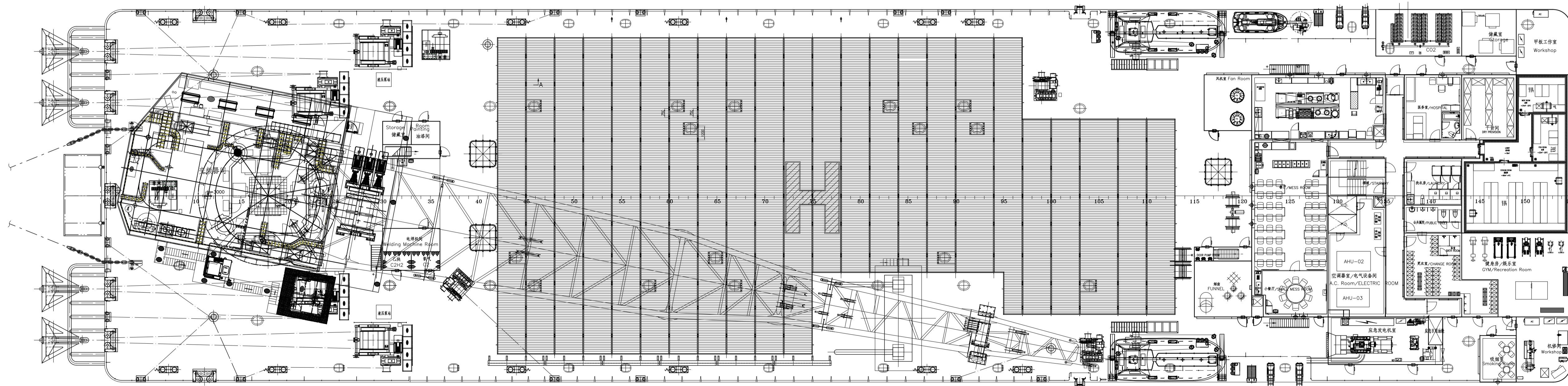
驾驶甲板
BRIDGE DECK



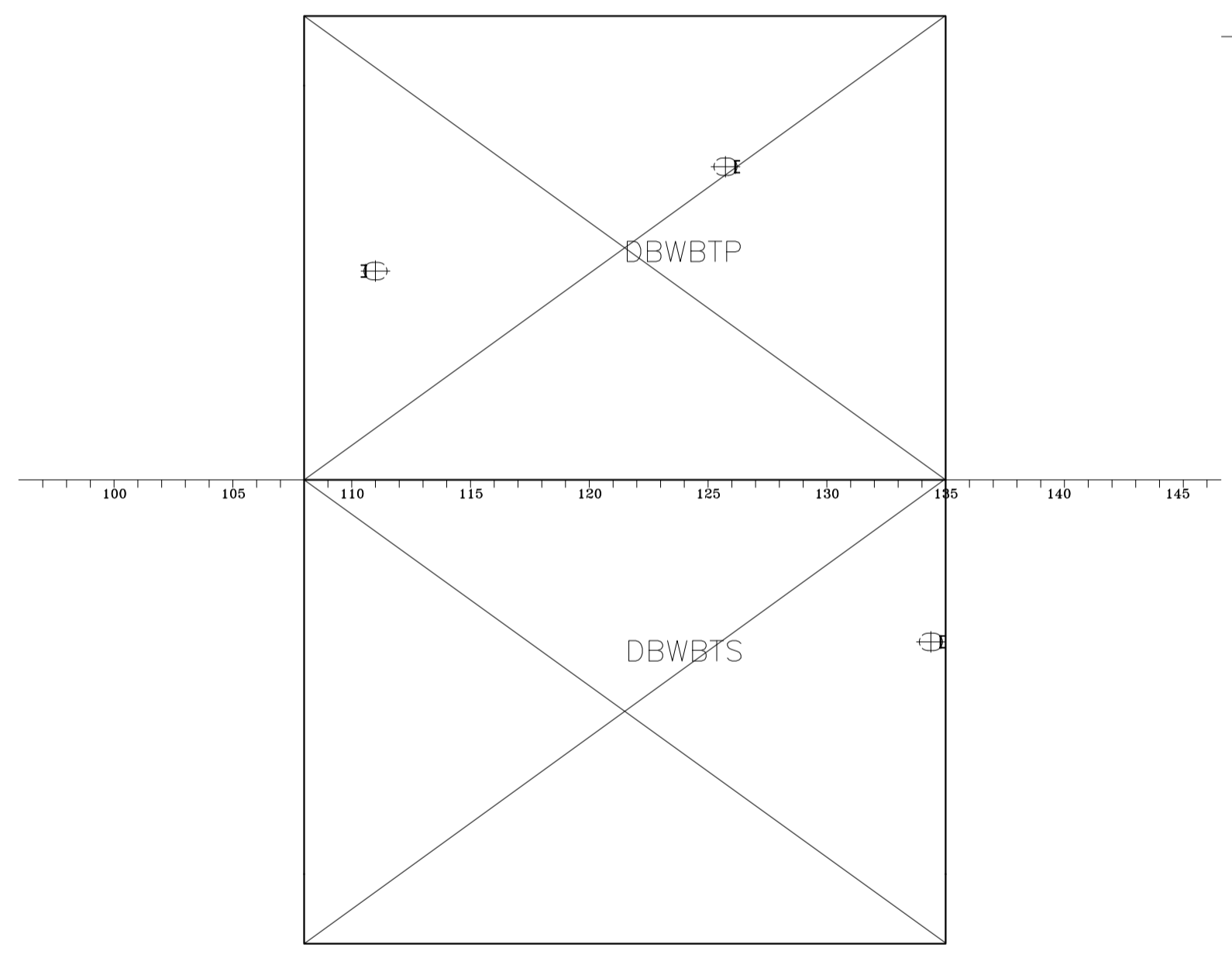
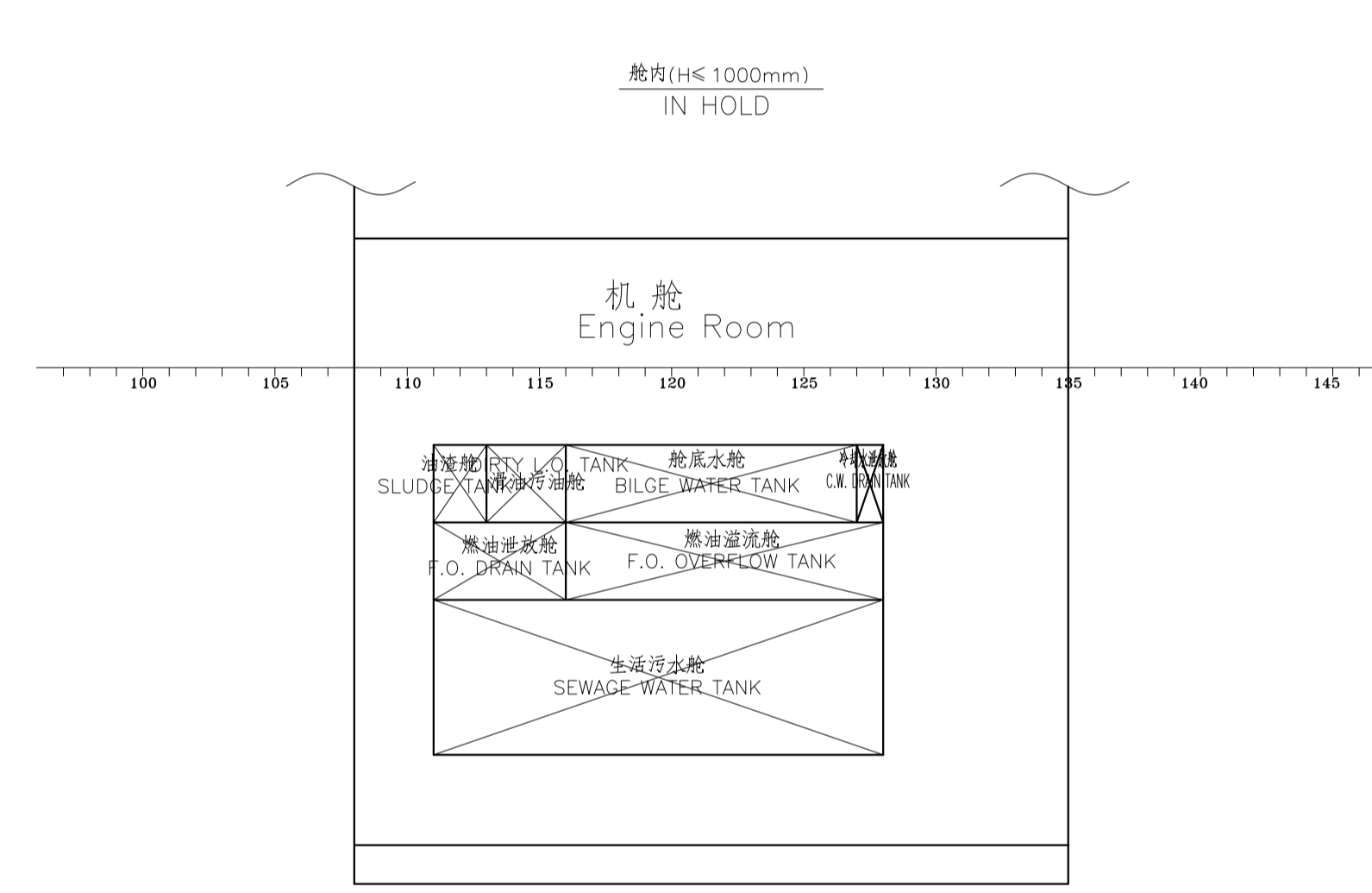
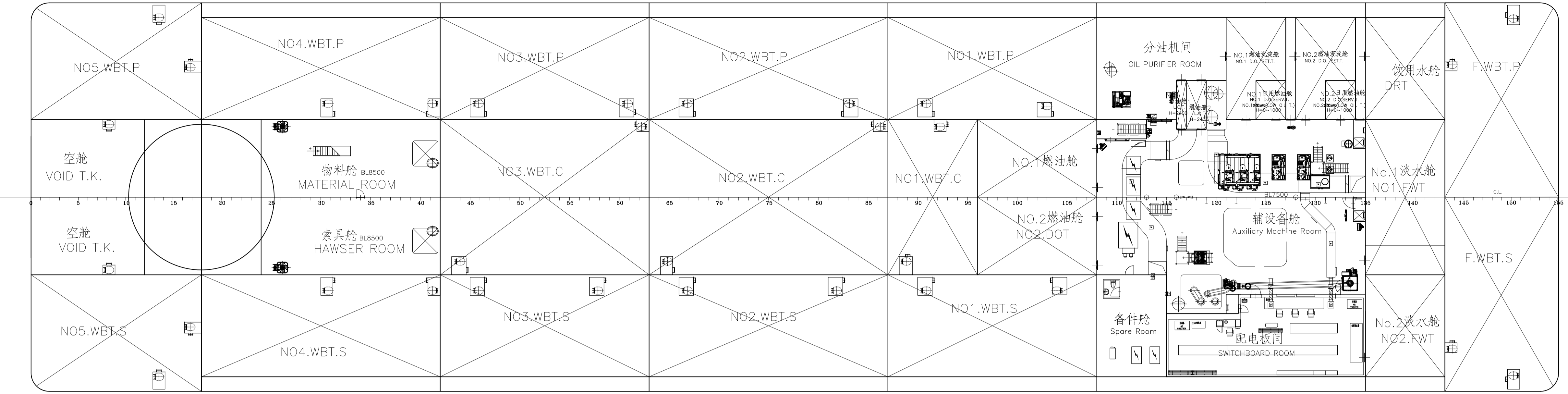
罗经甲板
COMPASS DECK



上甲板
UPPER DECK



中间甲板
TWEEN DECK



双层底
BOTTOM

舱内
IN HOLD

