

“Chuang Li”

DP3 4,500MT lifting capacity Self-propelled crane vessel



1. 4500T full revolving crane

Crane	Main hoist	Auxiliary hoist	Whip hoist
Load	4,500T at fixed condition at jib aft 3,500T at full revolving condition	800T at fixed or at full revolving	200T at fixed or at full revolving
Working radius	4,500T 28m -40m (fixed) 3,500T 28m -40m (revolving)	800T 34m -94.2m	200T 39.2m -115.6m
Lifting Height Above deck (Lifting speed)	95.2m@R28m 0-4m/min 4500T 0-4m/min 3,500T 0-8m/min No Load	111.6m@R34m 0-12m/min 800T 0-24m/min No Load	125.4m@39.2m 0-20m/min 0-40m/min No Load

2. Class of Ship (ABS/CCS)

★CSA Floating Crane, Lifting appliance, Salvage Ship, Pipe Layer, SPS, PSPC (B), Ice Class B, Loading Computer (S,I,D), Helicopter Facilities, In-Water Survey,

★CSM AUT-0, DP-3, Electrical Propulsion System, FTP, BWMP, COMF (NOISE) 3, COMF (VIB) 3, BWMS

3. Principal Particulars

Length	198.8m
Breadth	46.60m

Depth	14.20m main deck/21.6m upper deck
Draught	9.5m
Navigation draft	7.5m
Complement	399 persons
jib fixed aft	4,500t X 40m
Rated Speed	Max. 15 KTS

4 DP System

DP3 DGPSX2; MRUX3; HiPAPX2; SpottrackX2;	Taut WireX2; UPSX 6
--	---------------------

5. Machinery of deck

1) Positioning Winch	10 sets
Brake load	3,000kN
Wire Diameter	φ76 mm
Storage Capacity	3,000 m
Mooring Depth	300 m
2) Windlass	2 sets
Weight of anchor	12.6T
3) Deck crane	40t@35m
Cargo crane	15T@15m
4) Free deck Area	4500 m ²
Deck Load	10t / m2 upper deck 5t / m2 main deck

6. Generator

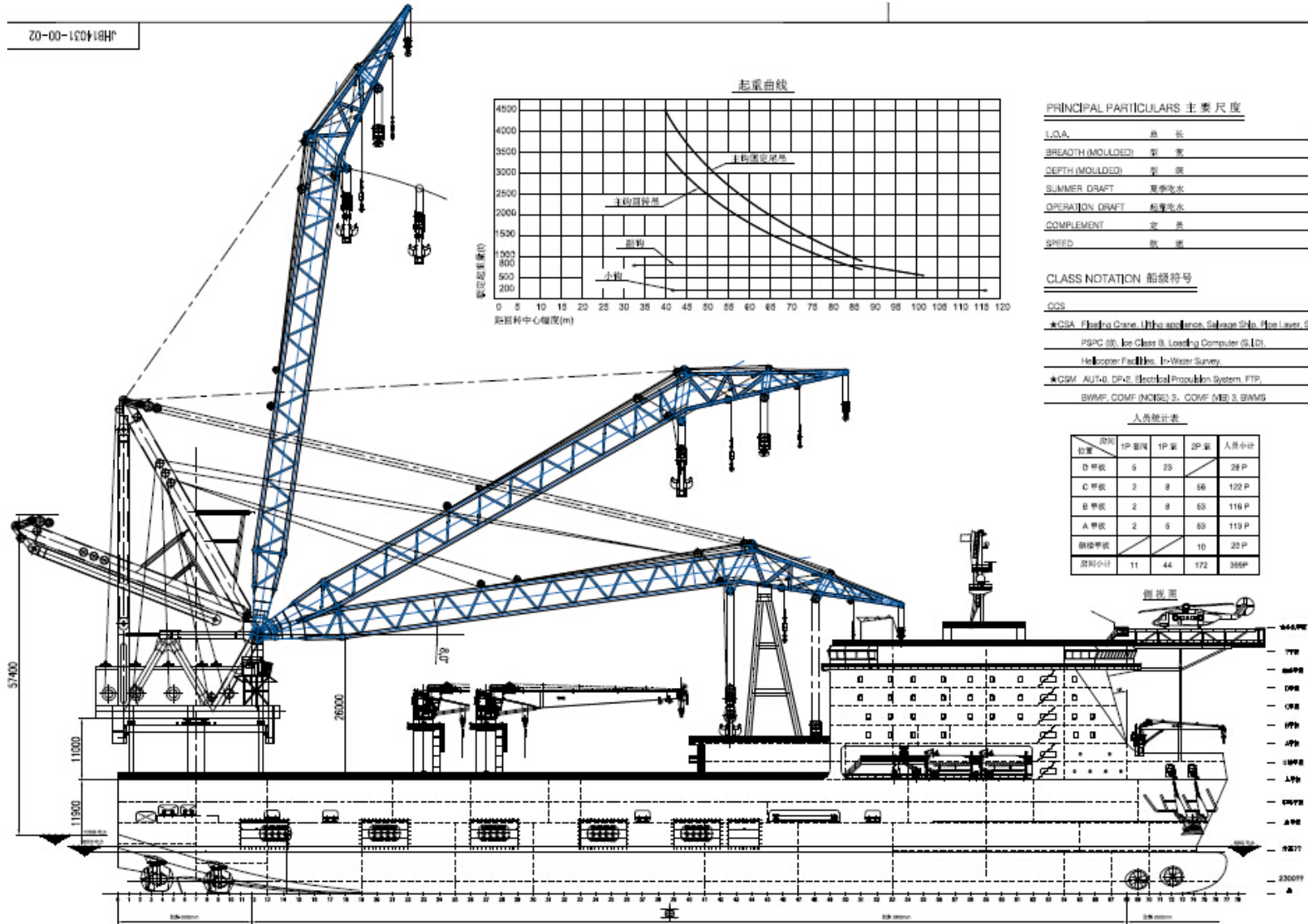
Total Generator Power	38,000KW
Main generator	11KV, 4,750KW 60HZ 8sets
Diesel engine	4,950 KW X 720R.P.M./ 8 sets
Aux. generator	1,500 KW
Aux. diesel engine	1,600 KW
Emergent generator	1000 KW
Emergent Diesel engine	1250 KW

7. Propelling machinery

Total Thrust Power	28,600 KW
Azimuth Propeller	4,000 kW X 2 sets + 4,500 kW X 2 sets
Retractable Propeller	3,300 kW X 2 sets
Tunnel Propeller	2,500 kW X 2

8. Pipe-laying system

S- lay up to 2,000m(space reserved, not installed);
Tensioner: 600T(space reserved, not installed);
A&R winch: 600T(installed);
Pipe dimension: 6"--60" (space reserved, not installed)



PRINCIPAL PARTICULARS 主要尺度

L.O.A.	总长	~186.80 m
BREADTH (MOLDED)	型宽	46.00 m
DEPTH (MOLDED)	型深	12.80 m
SUMMER DRAFT	夏季吃水	8.50 m
OPERATION DRAFT	站季吃水	10.20 m
COMPLEMENT	定员	388 P
SPEED	航速	~15.0 kn

CLASS NOTATION 船级符号

- CCS
- ★CSA Floating Crane, Ultra and/or Subsea Ship, Non-Liner, SPB
 - PSPC (3), Ice Class B, Loading Computer (S,LD)
 - Helicopter Facilities, In-Water Survey
 - ★CSM AUT-0, DP-0, Electrical Production System, FTE
 - BWPP, COMF (NOISE), S, COMF (ME), 3, BWMS

人员统计表

职别	1P 副机	1P 副	2P 副	人员小计
D 甲板	5	23		28 P
C 甲板	2	8	66	122 P
B 甲板	2	8	83	116 P
A 甲板	2	5	83	113 P
副机甲板			10	20 P
副机小计	11	44	172	388 P

LIFTING CURVE

